



CREATIVE BIOMART®

# Discover New Potential in ACE2 Research with Premium Quality Proteins from Creative BioMart

[Recombinant Protein](#) [Protein Analysis](#) [Events](#) [Promotion](#) [Contact Us](#)

## Your Trusted Partner for Advanced ACE2 Protein Solutions

[ACE2](#) – The Key Regulator in the Renin-Angiotensin System and Beyond

Creative BioMart provides researchers worldwide with high-purity, bioactive ACE2 proteins engineered to accelerate breakthrough discoveries. Our comprehensive portfolio covers every aspect of ACE2 research, from viral infection mechanisms to cardiovascular regulation.



## Why Choose Creative BioMart ACE2 Proteins?

- **Superior Quality:** Rigorous QC testing to ensure batch-to-batch consistency and reliability
- **Multiple Formats:** Available biotinylated, His-tagged, and Fc-tagged
- **Expert Support:** Technical support for your specific research needs



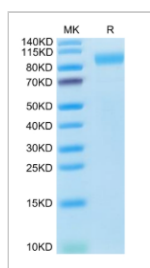
## Featured Applications:

- SARS-CoV-2 spike protein binding studies
- Renin-angiotensin system pathway analysis
- Protein-protein interaction investigations
- Drug discovery and development programs

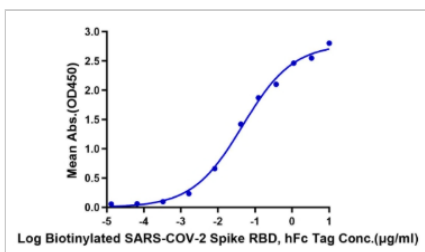


## Showcase

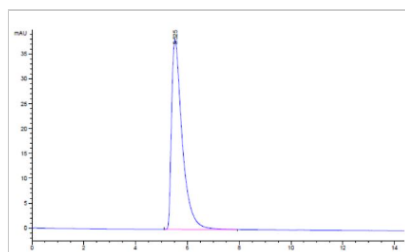
Cat.No.	ACE2-736H	ACE2-229H	ACE2-185H
Product Name	<a href="#">Recombinant Human ACE2 protein, His-tagged</a>	<a href="#">Recombinant Human ACE2 protein, His/Avi-tagged</a>	<a href="#">Active Recombinant Human ACE2 protein, mFc-tagged</a>
Species	Human	Human	Human
Source	HEK293	Mammalian Cells	HEK293
Tag	His	Avi&His	mFc
Purity	> 95% as determined by Tris-Bis PAGE; > 95% as determined by HPLC	>95% as determined by Bis-Tris PAGE; >95% as determined by HPLC.	>95% as determined by SDS-PAGE.
Endotoxin	Less than 1EU per µg by the LAL method.	Less than 1 EU per µg by the LAL method.	Less than 1.0 EU per µg by the LAL method.



SDS-PAGE  
(Cat.No.: [ACE2-736H](#))



ELISA DATA  
(Cat.No.: [ACE2-736H](#))



HPLC  
(Cat.No.: [ACE2-229H](#))

Experience the difference that premium quality proteins make in your experimental success. Join thousands of satisfied researchers who trust Creative BioMart for their most critical ACE2 research needs.

**Creative BioMart – Accelerating Life Science Discovery, One Protein at a Time**

[Request More Information](#)



CREATIVE BIOMART®

Professional,  
High Purity, High Yield,  
Bioactive, Batch Consistent,  
Global Delivery



### USA

45-1 Ramsey Road, Shirley, NY 11967, USA  
Tel: 1-631-559-9269 / 1-516-512-3133  
Fax: 1-631-938-8127

### Germany

65830 Krieffel, Gutenbergstraße 5. Frankfurt am Main,  
Germany  
+491793975992  
Email: [info@creative-biomart.com](mailto:info@creative-biomart.com)

[Global Locations](#)

CREATIVE BIOMART INC.